



THE ENERGY MANAGEMENT REVOLUTION

Professional energy management.
cost-efficient, simple, flexible, distributed and modular.

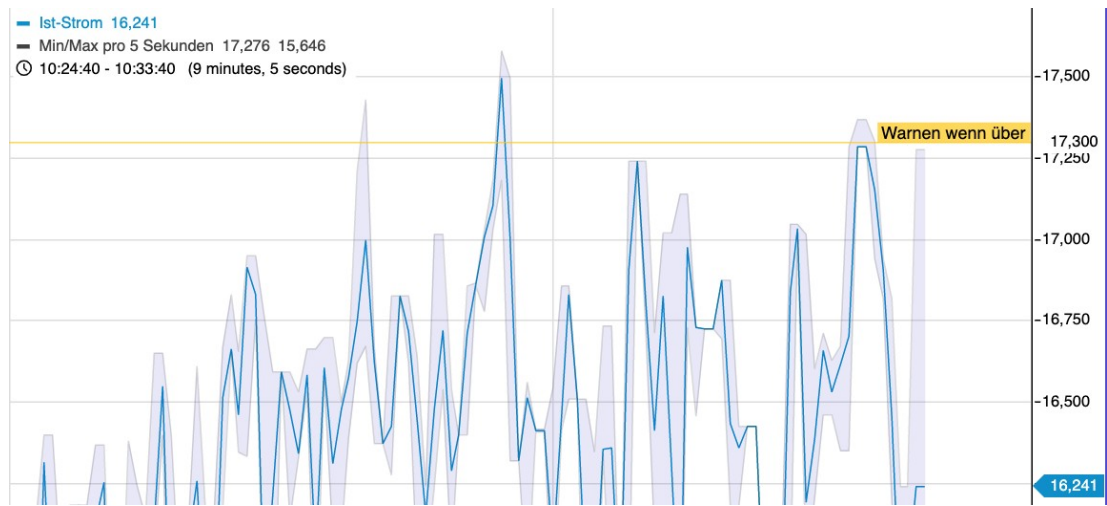
Product information technical data

Om7sense is a cutting-edge technology energy management system. It was developed with the requirements and wishes of the operators within the data centre environment in mind.

Unlike DCIM solutions which try to cover all aspects of data centers (such as asset management, cabling etc.) Om7sense focuses on the management of electrical energy, alerts and sensor data. To reduce the workload on operations staff, Om7Sense has been strictly based on a high degree of automation as well as on easy-to-learn operation.

Overview:

- Available either as software solution or "plug & play" pre-installed in an appliance
- Automatic identification of PDUs within a network
- Scalable from small installations to large, distributed data centers
- All data centre locations can be monitored and controlled from one or more management-centers
- Alerts can be transmitted via e-mail, text messages or further *network services*.
- Optional display of devices monitored either as lists or as hierarchically arranged icons
- Freely adjustable thresholds
- Thresholds also for devices such as PDUs which do not support any thresholds of their own
- Smart Rules, a dynamic automatic threshold mode
- Support for all sensors / switches connected to PDUs or sensor hubs
- Monitoring and display of rack side coolers or heavy load coolers
- Integrated PUE calculation
- High-quality graphics display of histograms
- Integrated database for storage of measured values and network quality analysis
- Communication protocols for supported devices SNMP (v1/2c/3), HTTP(S), SSH, Websocket
- Protected due to the use of secure protocols and encryption methods
- User-definable reports
- Fast and secure swap of PDUs with backup of relevant firmware and setups in the firmware database



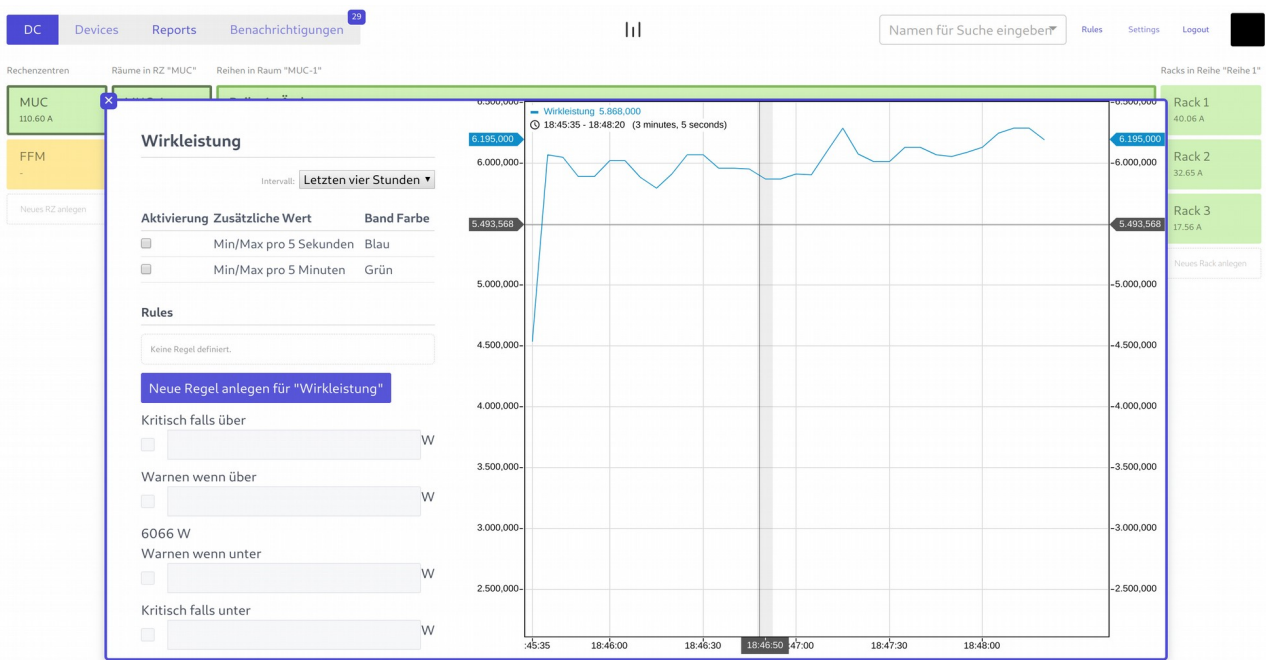
Om7Sense product information technical data

With the display of geographical and functional units the user is always able to keep track of which data centre, room, rack row or rack he is currently working in.



Only one click generates a new fire zone, a new rack suite or new rack which the existing PDUs are then assigned to.

Both the analysis and the graphics functions permit the creation of meaningful quality reports and facilitate the search for unusual behavior.



Requirements:

Om7Sense is a software-based solution which seamlessly integrates into modern datacenter software stacks. Available as vmware image, Docker / Kubernetes container or Linux application.

Virtual System: VMWare ESX(i) version 4.1 or higher / Docker 18.03 or higher / modern Linux OS - Memory 3+GB, Disk 80GB (OVF)

Alternatively you can purchase Om7Sense preinstalled on an appliance for mounting on the DIN rail or as 19" industry-quality single height appliance.

Appliance: 19" rack single height or pizza box / DIN rail

Supported products (Support Matrix)

We support the following products in the normal data center and enterprise environments:

- PDUs
- USVs
- ATS
- Sensor systems
- Cooling systems

| Vendor | Series |
|-------------------------------|---|
| APC / Schneider | rPDU2 (AP8xxx) All UPS |
| Avocent | PMSeries PDU, ACS 800 Series |
| BM Green Cooling | Sidecooler Rack Cooling |
| CAN Technologies Inc. | RS485 PDU |
| Carel Cooling | Carel Cooling Controller |
| Data Center Produktion | LAPRESA-I |
| Enconnex | All PDU |
| Emerson / Liebert | PDU: MPH (see also Vertiv) |
| Enlogic | ENSeries PDU |
| Gude GmbH | All PDUs All ATS (Transfer Switches) |
| HW Group | Sensor-Boxes Poseidon2, STe Power-Meter PWR3 |
| Panduit | PDU: smartzone G5 |
| pduXpert Ltd. | PDU KWX, KWX2 UPS KWU |
| PowerTek | PDUs |
| Raritan | PX2, PX3 PDUs EMX Sensor Boxes BCM2 Energie-Monitor |
| Schleifenbauer | All PDUs, hPDUs Sensor Boxes: DPM3, DPM27 |
| Server-Tech | PDUs: Sentry 3, CS |
| Vertiv | PDUs: MPH, MPX |

Om7Sense GmbH Feldbergstraße 29 81825 München, Germany

Contact: Phone: [+49 871-2066707-0](tel:+4987120667070) • E-Mail: info@om7sense.com

Office Landshut: Om7Sense GmbH Altstadt 357 84028 Landshut, Germany